

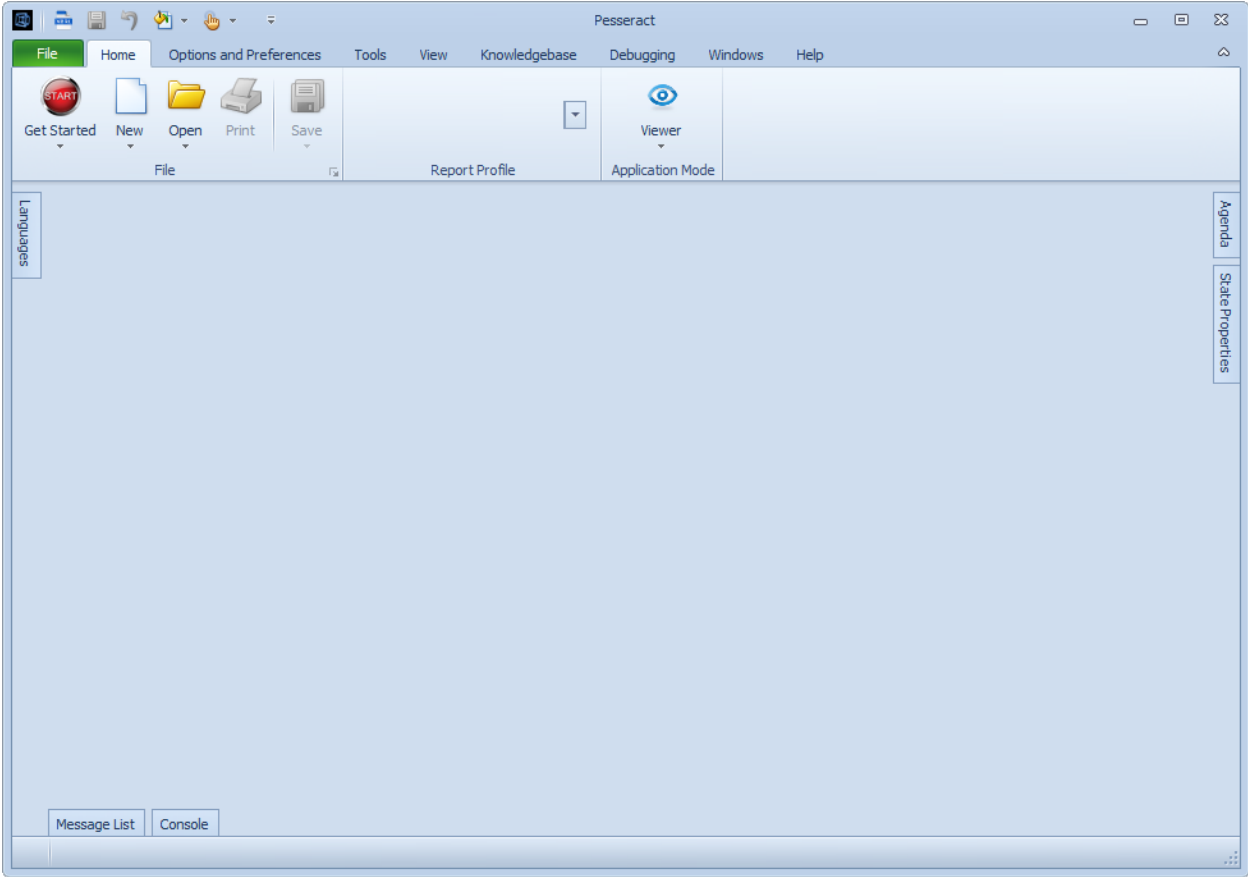
Get Started With Pesseract

By Charles Hoffman, CPA

This document walks you through the basics of Pesseract. You will load three XBRL-based digital financial reports, verify that the reports have been created correctly, and learn basics of navigating around the pieces of a report.

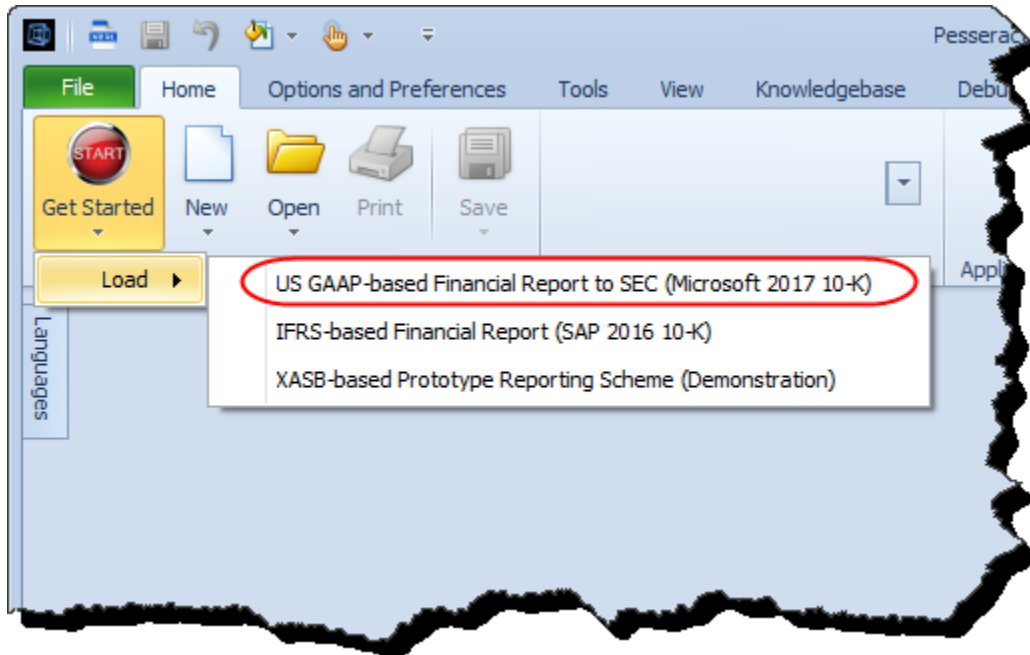
STEP 1: Start Pesseract.

Open the Pesseract application and the main form is displayed and the “Home” tab of the menu ribbon is displayed.



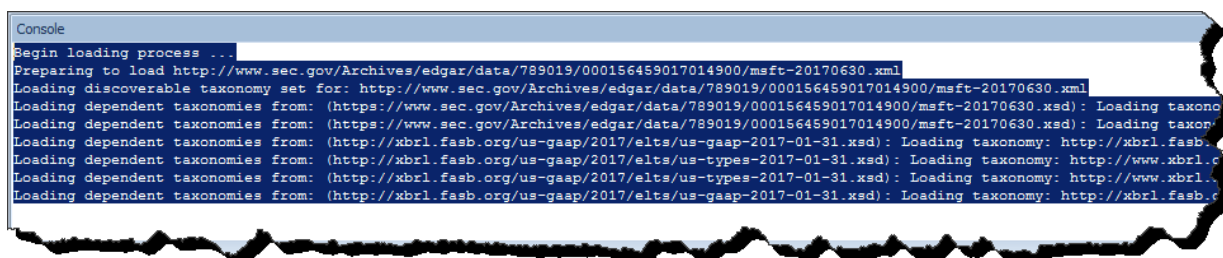
STEP 2: *Open an XBRL-based digital report.*

Press the “Get Started” icon on the “Home” menu ribbon. Select the “US GAAP-based Financial Report to SEC” menu item.



This will load the Microsoft 2017 10-K filing from the SEC’s EDGAR system. The XBRL instance, related XBRL taxonomy files, and US GAAP XBRL Taxonomy used by the report are all pre-cached and should load relatively rapidly.

You can see the files being loaded in the “Console” window on the bottom of the main window:



NOTE that this is the actual XBRL instance document and related XBRL taxonomies that was loaded:

<http://www.sec.gov/Archives/edgar/data/789019/000156459017014900/msft-20170630.xml>

STEP 3: View information from the report.

After the loading process has been completed you will see the fragments of the report in a list on the LEFT side of the screen with the first fragment highlighted in GREEN. The highlighted report fragment is shown on the RIGHT side of the screen.

Toward the bottom of the screen you can see the “Message List” which is a summary of information, warnings, and errors that resulted from the loading process.

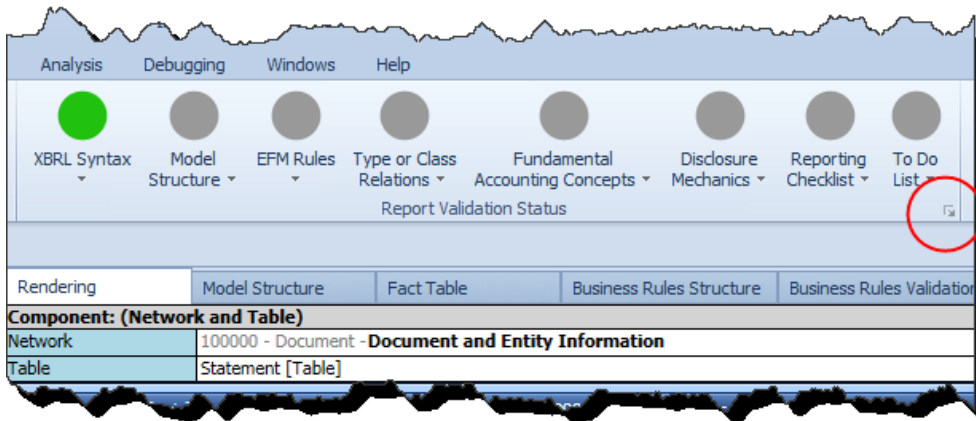
The screenshot displays the XBRL Viewer interface for the file 'Instance (msft-20170630.xml) - Pesseract'. The left pane shows a list of 128 components, with '100000 - Document - Document and Entity Information - Statement' selected and highlighted in green. The right pane shows the detailed view of this component, including a table with columns for 'Statement [Line Items]', '2017-07-31', '2016-07-01/2017-06-30', and '2016-12-31'. The table contains various financial and corporate data points for Microsoft Corporation.

The Message List at the bottom of the interface shows the following messages:

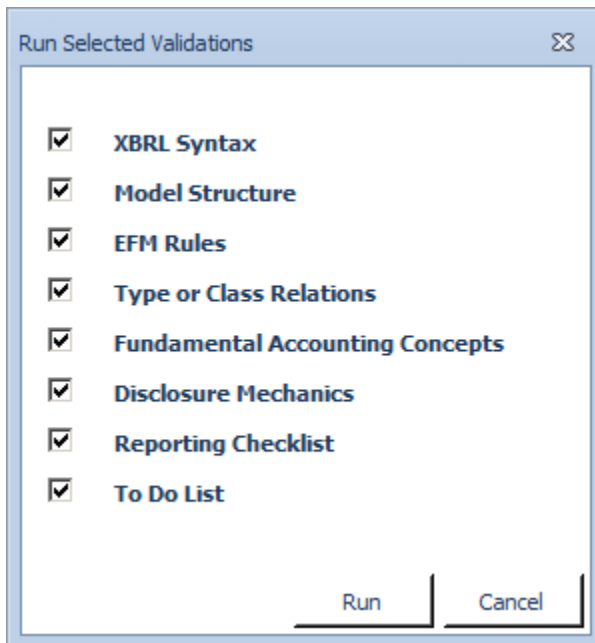
Type	Message ID	Message	Location
Info	Report.Load	Loading was successful: please see messages as there are errors/warnings.	Filename: msft-20170630.xml
Incon...	Report.Validation...	Mathematical computation inconsistency related to memberaggregation with member, us-gaap:EquityComponentDomain	101100 - Disclosure - Summary of Changes in Accumulated Other Comprehensive Income by Component (Detail)
Incon...	Report.Validation...	Mathematical computation inconsistency related to memberaggregation with member, us-gaap:EquityComponentDomain	101100 - Disclosure - Summary of Changes in Accumulated Other Comprehensive Income by Component (Detail)
Incon...	Report.Validation...	Mathematical computation inconsistency related to memberaggregation with member, us-gaap:EquityComponentDomain	101100 - Disclosure - Summary of Changes in Accumulated Other Comprehensive Income by Component (Detail)

STEP 4: Validate the document against business rules.

After the document has loaded, on the “Home” tab, in the “Report Validation Status”, select and click the icon in the lower right hand corner circled in RED below:

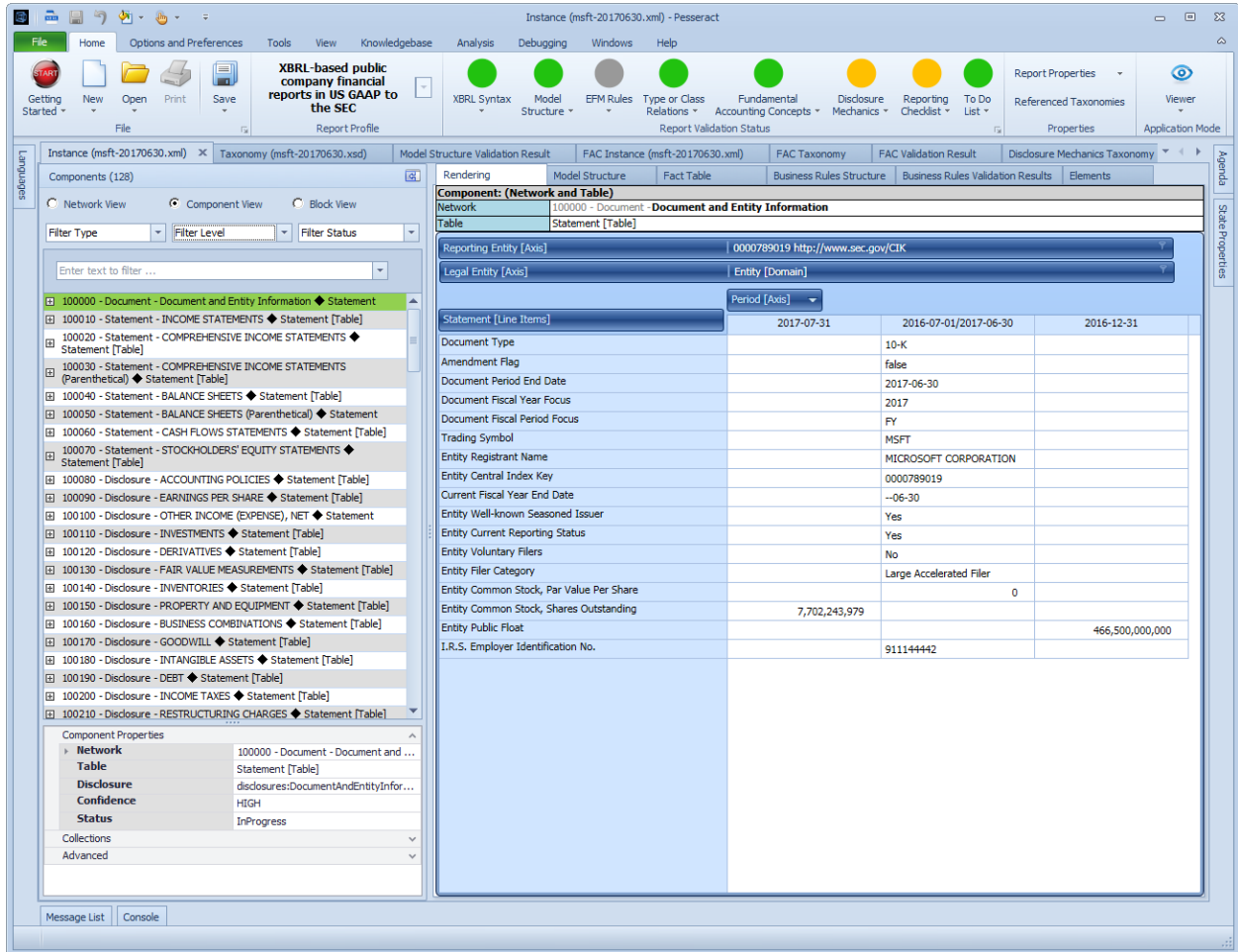


The following window will appear. Use the default options (i.e. all items selected) and then press the “Run” button:



After about 30 seconds or so, the icons in the Report Validation Status section will change colors. GREEN means that everything validated successfully. ORANGE indicates that there is some sort of inconsistency that has been detected. RED would indicate that some sort of serious error has occurred.

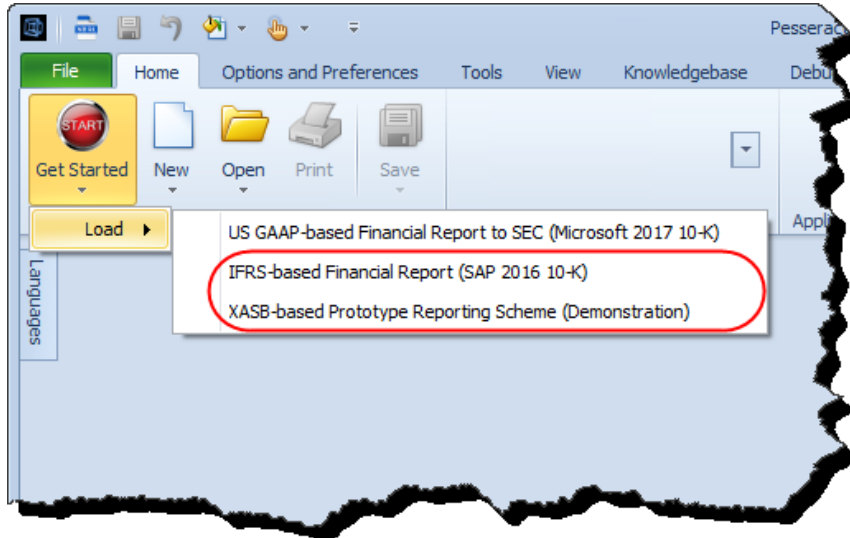
Notice that several new documents have been added to the main window of the application. Those documents contain information about the validation rules that were used and the results of the validation process.



You can explore the different documents to begin to understand what is going on when a document.

STEP 5: Repeat the same process for the other two documents.

After loading the first document and validating it, go back to the “Get Started” button and load the second document and validate it. Then, load the third and validate it.



NOTICE that the Pesseract application supports the US GAAP reporting scheme, the IFRS reporting scheme, and a prototype reporting scheme which we created for demonstration purposes called XASB-based reporting.

You should be able to get through each of these examples if the application was installed correctly. For each of the examples the XBRL instance and the related XBRL taxonomies are all cached locally so you don't need to wait for them to download.

NEXT we would encourage you to watch the following videos in order to get an idea of how to move around in the Pesseract application and perform other tasks:

https://www.youtube.com/playlist?list=PLFjXOvKVNBOrQvn_HBeyAN-hCVRZZMFJh

OR, walk through another guided tour of the different features of Pesseract:

<http://pesseract.azurewebsites.net/help/Help.html#home>

PROBLEMS? Please email Charles.Hoffman@me.com if you need help resolving software installation issues.