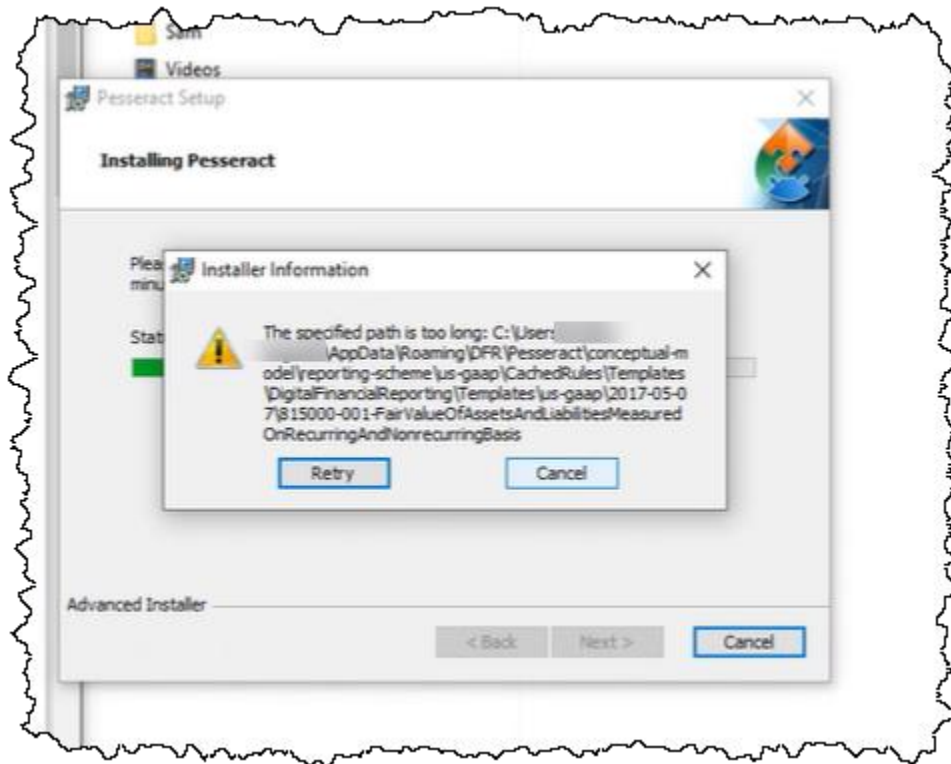


Known Issues

The following is a summary of known issues related to installing and running Pesseract.

“The specified path is too long:”

There is an issue which may be encountered when installing Pesseract. You may receive the following message:



This issue is caused by cached files whose file names are slightly too long for the Microsoft operating system to handle. It occurs if you have a long user name like “ThisIsMyUserNameInWindows”.

The work around to this issue is to create a user on your computer with a shorter user name. For example, any name of 8 characters or less such as “**MyName**”.